

# HIGH- ARCHITECTURE LIGHTS

ShangLin Edition

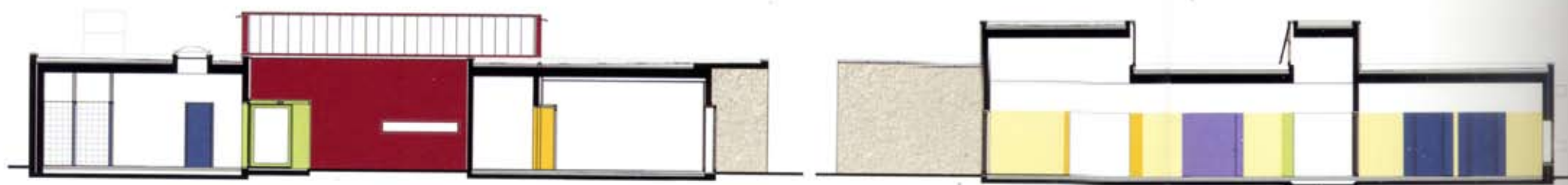
3

**P192 project A01 architects** Private Residence Klosterneuburg Production Facility and Office building for Schiebel Elektronische Geräte GmbH **P198 HOLODECK architects** 22 tops **P200 eer architectural design** House b.v. **P202 Allford Hall Monaghan Morris** Adelaide Wharf Kentish Town Health Centre The Yellow Building Westminster Academy at the Naim Dangoor Centre **P212 KHR arkitekter** Biocenter The Church of Holy Cross Fiberline Factory **P218 Heikkinen-Komonen Architects** Emergency Services College, phase IV Lappeenranta University of Technology, phase VII **P224 Rolinet & associés** The Chapel of the Deaconesses of Reuilly The Church of Ermont Taverny **P230 Anamorphosis Architects** TECHNOLIS The Cultural Park of the Hellenic Cosmos (CPHC) **P244 Studio Nicoletti Associati** Arezzo Law Court **P248 Pietro Carlo Pellegrini Architetto** The Guest house for the pilgrims Historical Museum of Resistance **P252 C+S ASSOCIATI** The Nursery School in Covolo University Hall of Residence in Novoli Water Filtration Plant **P262 Neutelings Riedijk Architecten** Netherlands Institute for Sound and Vision Walter Bos complex **P272 Architectenbureau Marlies Rohmer** De Matrix: five quadrangles and polyester facade elements De Zeester: day care centre for mentally handicapped persons Smarties: student accommodation **P280 UArchitects** Maasberg Juvenile Detention Living Maasberg Juvenile Detention Pavillion **P290 A-lab (Arkitektur Laboratoriet)** Arctic Culture Centre **P294 Rintala Eggertsson**

## EUROPE EUROPE EUROPE

**Architects** Element House **P298 Jarmund / Vignæs AS Architects** Edge House Oslo International School Svalbard Science Centre 78°north **P314 Olafur Eliasson + Kjetil Thorsen** Serpentine Gallery Pavillion 2007 **P316 KWK PROMES architect Robert Konieczny** Aatrial House Broken House OUTrial House **P324 Correia / Ragazzi Arquitectos** Casa em Lousado Casa no Gerês **P334 EZZO** Paco de Pombeiro / Rural Hotel **P338 Souto Moura Arquitectos S.A.** Braga Municipal Stadium Burgo Tower **P346 AK2 architectural studio** RELAXX, Sport and Leisure Centre **P348 Corona & P. Amaral Architects, S.L.** Vivienda en Jardín del Sol, Tacoronte **P352 Rafael de La-Hoz Arquitectos** The High Council of the Chambers of Commerce Telefonica's District C in Las Tablas **P362 Abalos + Sentkiewicz Arquitectos** Porte de La Chapelle Taipei Performing Art Center **P370 Wingårdh Arkitektkontor AB** K:fem department store Müritzeum - science and visitors centre **P378 ssm arkitekten ag** Erweiterung Kunsthaus **P380 EM2N MATHIAS MÜLLER | DANIEL NIGGLI | ARCHITEKTEN AG | ETH | SIA | BSA** Community Center Aussersihl Conversion Theatre 11 Extension Public Records Office Canton Basel-Landschaft Toni-Areal **P390 dl-a, Devanthery & Lamunière Architectes** EPFL School of Life Sciences Philip Morris International Headquarters **P398 Davide Macullo Architects** House in Carabbia House in Lumino House in Ticino







# C+S ASSOCIATI

## The Nursery School in Covolo

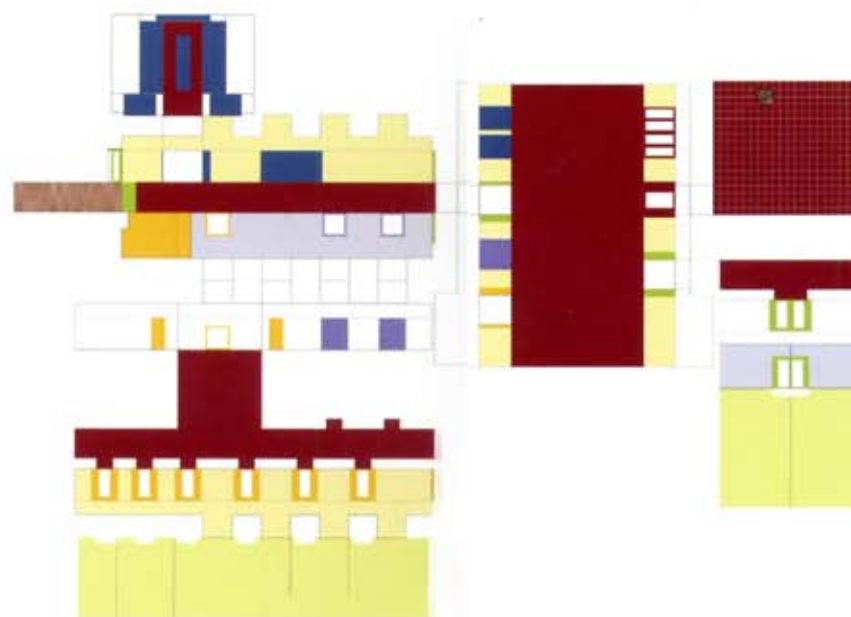
*Pederobba, Treviso, Italy*

Immersed amongst the vineyards and wheat fields, their rows tracing the memories of ancient crops, where space is marked rhythmically by the stakes supporting vine shoots and loses its colourful third dimension at the moment of ploughing time, is the small plot that hosts the nursery school in Covolo. It appears to be the missing piece necessary to complete the small urban centre, whose stable landmarks include the 16th-century church and bell tower, and the Dominican complex of Villa Bellati. A collection of modest structures is linked by a continuous series of stone walls, held intact by a thin layer of rough plaster. These walls, which accompany us for much of the way into the centre of Pederobba defining the boundaries between the network of roads and cultivated fields throughout the region of the Pedemontana, run adjacent to a meandering mass of vegetation which fills the wide gravelly bed of the Piave River.

The new building forms an enclosure facing south-east, looking over wheat fields and vineyards, embracing and allowing itself to be defined by the features of the landscape. A rough concrete wall is coloured to match the surrounding landscape, treated with split aggregate to reflect light in a variable manner depending on its orientation. The building is its structure: a wall.

A wall that opens to the south like the great arches of the barchesse, the huge porti-coed barns typical of the region, revealing, at that point, the massive quality of the structure; a wall that retracts and doubles, colouring itself to emphasize its passages, its thresholds; a wall that forms itself in response to the tensions of what it encloses; a wall that travels through the complex, smoothing out while continuing to guide the unfolding of the spaces.

The overhang, the stabilized Sarone gravel paving and the lighting all expand the moment of the threshold, amplifying the classrooms spaces towards the exterior, or bringing the garden, with its sounds and scents, into the school. This operation of extension of the 'door', this transformation of the threshold into an actual space become the imagination of a possible world, different and strange, suspended between inside and out. It represents hesitation, desire, potential and wonder.





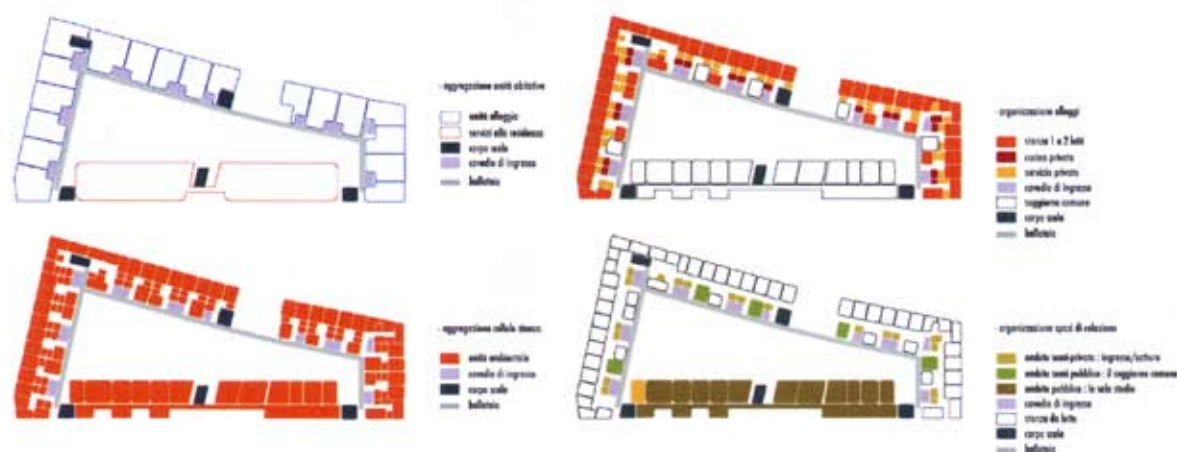








# C+S ASSOCIATI



## University Hall of Residence in Novoli

Florence, Italy

The students' university housing in the former Fiat area at Novoli was designed to adapt to the constraints of the brief – the perimeter of the lot, the alignment, the building height – and to use them as a springboard for original compositional and typological solutions that have produced a light-filled interior landscape inside severe walls. Despite the double-courtyard layout the building is far from inward-looking and imposes order on the wider context: the passageway that cuts crosswise through it is seen as a "city gate", a way through the block and a focus for communal activities, as well as access to the students' lodgings. The twin themes of "urban silence" and "constructed mass", borrowed from historical city's fabric but updated to reflect today's different formal and plastic awareness, are evident on the solid though not impenetrable exterior facades. The continuous reinforced concrete base, grey wood shingles and glass-brick fascia are – of course – silent, evenly-coloured, unbroken surfaces but they are also loaded with positive vibes and nuancing ready to be transmitted to the interior. It is here that the building reveals the extent to which the elementary mass visible from the street is in fact a complex structure whose layout, planimetric variations and deviations of section generate a lean-looking though atmospheric interior of raw concrete streaked by form work and in some places deeply gouged. Understanding the building's functional layout – shops, entrance and refectory on the ground floor; study rooms and services on the upper levels facing the principal street and lodgings (for 250 students) in the other three blocks – explains the layout of the external facades, and indicates how the kinds of materials used are related to the amount of light that reaches the interior. The students' bedrooms (two types) are the outcome of painstaking typological research – the carefully calculated interlocking of reduced surfaces looks like a modern-day shot at existenzminimum – and successfully reconcile external balcony access with dual exposure towards the street, behind the shingle screen, and the internal courtyards with their coloured walls and quiet gardens.

The halls of residence are typologically hybrid, with balcony access and dual exposure. The standard lodging comprises an entrance hall with a large window opening onto the access balcony, two bedrooms (18 sqm) and two bathrooms; a third bedroom (12 sqm), also with a bathroom, is situated towards the balcony and 80 cm higher to prevent passers-by from looking in. A second standard lodging has a communal area facing the balcony and at the same height, instead of the third bedroom.





