

Kindergartens, Schools and Playgrounds





- 6 Introduction
- 10 Arteks | El Puget
- 18 Rios Clementi Hale Studios | LAUSD Primary Centers
- 26 Venhoeven Architects | Brede College
- 36 Cottrell & Vermeulen Architecture | NDNA Regional Center
- 44 Studio E Architects | Astronomy Classroom
- 50 Div. A Arkitektur | Kastellet Primary and Secondary School
- 60 Fabio Della Torre, Claudia Bigi | Arcobaleno Kindergarten
- 68 Div. A Arkitektur | Ringstabekk Secondary Institute
- 78 Buschow Henley | Performing Arts Hall at Caldicott School
- 86 G+W | Primary School in La Corita
- 94 Wingardh Architects | Mimers Hus
- 102 Atelier Central | Kindergarten in Bicesse
- 108 Wingardh Architects | Secondary Institute in Aranäs
- 116 nbAA | Kindergarten in Cacém
- 126 Winkler Architektur | Musikchule Gratkorn
- 132 Taller Básico de Arquitectura | Nursery and Surgery in Gorraiz
- 142 Andreas Treusch | Natorpgasse Primary School
- 150 AMP Arquitectos | Rafael Arozarena Secondary Institute
- 160 Marcos Acayaba | College in São Paulo
- 166 Dietrich Untertrifaller | Kindergarten in Egg
- 176 Randić Turato | Primary School in Croatia
- 184 Shuhei Endo | Bubbleecture
- 192 Boora Architects | Secondary Institute of Clackamas
- 200 C+S Associati | Kindergarten in Pederobba
- 208 ADP Architects | Western House Primary School
- 216 Richard Rogers Partnership | Minami Yamashiro Primary School
- 224 Machné Architekten | Kindergarten in Leisach
- 232 Gruzen Samton Architects | Primary School in Babylon
- 240 John Friedman-Alice Kimm Architects | Expansion of Aragon Avenue Elementary School
- 248 Hermann Kaufmann | Bundesgymnasium Bludenz



The structure of perforated walls favors the entry of natural light, which, in turn, determines the atmosphere of each space. Likewise, the different colors used mark an itinerary of activities and underline the contrast between the open and closed spaces.

KINDERGARTEN IN PEDEROBBA

C+S Associati

Pederobba, Italy, 2005

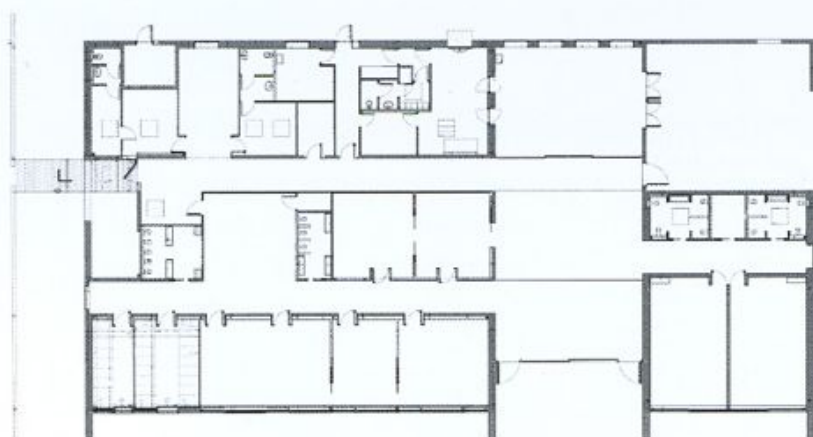
Photos © Alessandra Chemollo, Carlo Cappai



Surrounded by vineyards and wheat fields and located next to the small historic quarter, this nursery has been inserted into the simple urban landscape of Covo-lo. The newly built buildings face southeast and rise to the height of a single story, so as not to look out of place with the surrounding constructions. Their horizontal profile merges with the plains of crops that surround them. The form that these volumes evoke is as simple as that of a wall, sometimes doubled, which faces south, as do the traditional barns in the area.

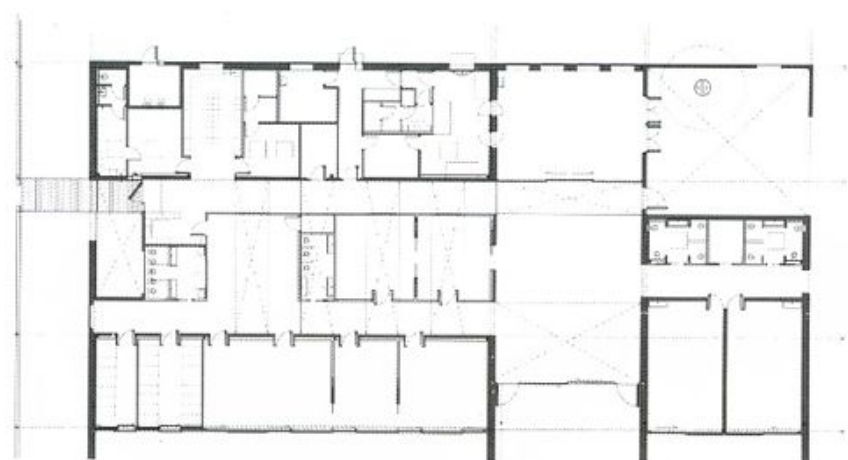
The south façade has three large doors protected by canopies, which filter the entry of natural light. A succession of glass sliding doors links the classrooms with the outside and helps to integrate the garden with the educational complex.

The north façade is more compact and delineates the access to the service area, which includes the laundry room, the boiler and the kitchens. A longitudinal axis running from east to west acts as a backbone to the classrooms. This street is signed with different colors indicating the different ways to the entrances, the classrooms, the common areas, or the teachers' room. The street ends in a large central space that joins all the project's elements; the open entrance to the garden, the cafeteria and the classrooms.



Plan

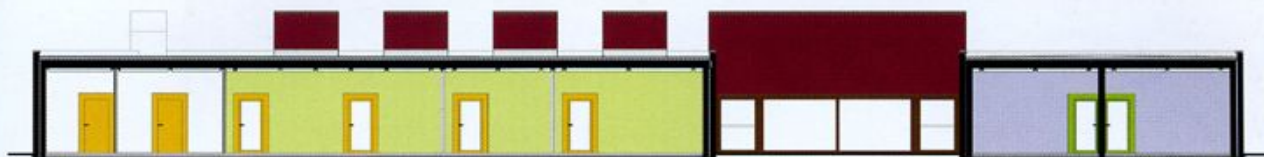
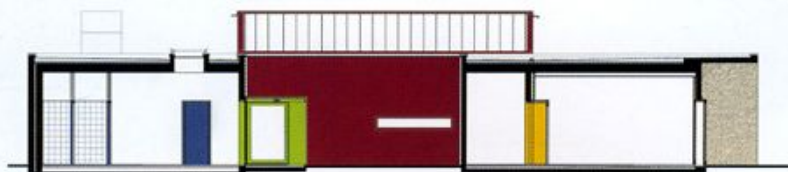
0 3 6



Plan detail

0 2 4

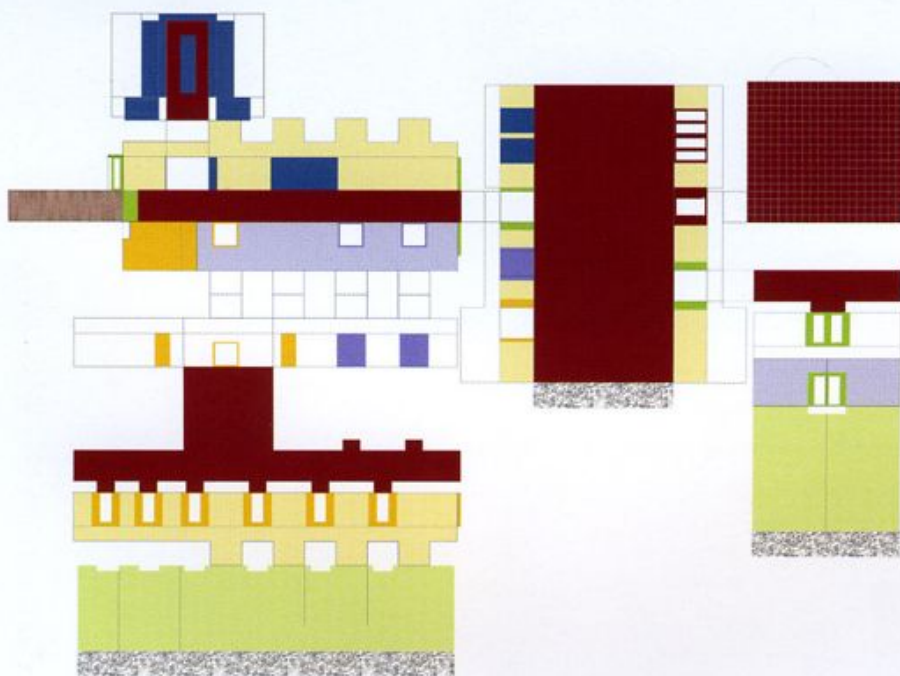




Sections

0 2 4





Construction detail