



PRINTED IN GREAT BRITAIN

THE ARCHITECTURAL REVIEW

WWW.ARPLUS.COM

UK £9/€17 USA \$25 DECEMBER 2008

1 2 >
9 770003 861083

10 INSPIRING YEARS OF EMERGING ARCHITECTURE

FOUNDED 1896

Published monthly
Emap Inform, Greater London House,
Hampstead Road, London NW1 7EJ, UK
Email: lynne.jackson@emap.com

EDITORIAL

Editor and Editorial Director
PAUL FINCH 020 7728 4591
Managing Editor
CATHERINE SLESSOR 020 7728 4592
Art Director
MICHAEL HARDAKER 020 7728 4588
Assistant Editor
ROB GREGORY 020 7728 4587
Production Editor
JULIA DAWSON 020 7728 4590
Editorial Co-ordinator
LYNNE JACKSON 020 7728 4589

ADVERTISING

International Sales Manager
Francine Libessart +44 (0)20 7728 4583
UK and International Account Manager
Edmond Katongole +44 (0)20 7728 4561
Classified Executive
Christopher Shiel 020 7728 4562
Business Development Manager
James McLeod +44 (0)20 7728 4584
Italian Advertising Sales, Milan
Carlo Fiorucci +39 (0)362.23.22.10
Fax: +39 (0)362.32.69.34
Email: carlo@fiorucci-international.com
US Advertising Sales, New York
Kate Buckley +1 845 266 4980
Email: buckley@moveworld.com
Production Manager
David Evans 020 7728 4110
Marketing Manager
Steve Budd 020 7728 5043
Marketing Executive
Lucy Keenan 020 7728 3974
Group Commercial Director
Jim Wilkinson +44 (0)20 7728 4452
Advertising Manager
Sandra Spencer +44 (0)20 7728 4560
List rental: Jonathan Burston, Uni-Marketing
Tel: +44 (0)20 8995 1919
Email: jburston@uni-marketing.com

SUBSCRIPTIONS & BACK ISSUES

To subscribe please use the card in this issue
Tel (UK): 0844 848 8858
Tel (overseas): +44 (0)1858 438 847
Email: are@subscription.co.uk
UK £94
UK student £66
Europe €147
Americas \$199
Japan £184
Rest of world £136
American copies are air speeded to New York
BACK ISSUES cost £10 in UK, £16 overseas
Tel: (UK) 0844 848 8858
(Overseas) +44 (0)1858 438 847
Fax: +44 (0)1858 461 739
Email: are@subscription.co.uk

NON DELIVERY OF ISSUES & CHANGES OF ADDRESS

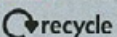
Contact: Tower Publishing
Tel: +44 (0)1858 438 847
Fax: +44 (0)1858 461 739
Email: are@subscription.co.uk
You can also write to: AR subscriptions,
Tower House, Sovereign Park,
Market Harborough, LE16 9EF, UK
American subscribers - contact The Architectural
Review, c/o PSMJ Resources Inc, PO Box 95120,
Newton, MA 02495, USA
Tel: +1 617 965 0055 Fax: +1 617 965 5152

BOUND VOLUMES

Bound volumes (UK only): contact
John Lawrence. Tel: 01234 346692

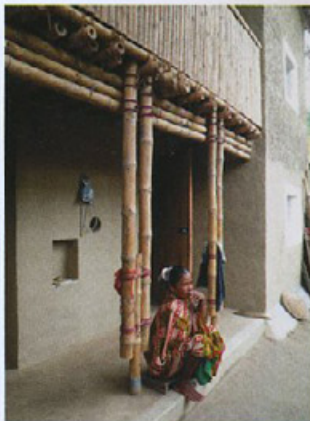
The Architectural Review (ISSN 0003-861X) is published
monthly for \$199 per year by Emap Royal Mail International
c/o Smartmail, 140 58th Street, Suite 2B, Brooklyn, NY 11220-
2521. Periodicals postage paid at Brooklyn NY and additional
mailing offices. Postmaster: send address changes to The
Architectural Review, c/o PSMJ Resources Inc, PO Box 95120,
Newton, MA 02495.

ABC circulation 20 733 (audit issue May 2008)



When you have finished with
this magazine please recycle it.

© Emap Inform 2008



Anna Heringer in Rudrapur (p46) SMAQ in Stuttgart (p68)

TNA in Tokyo (p70)

EMERGING ARCHITECTURE

VIEW

- 29 Inauguration of the World Architecture Festival in Barcelona

COMMENT

- 36 Looking back over 10 years of the AR Awards for Emerging Architecture PETER DAVEY

AR AWARDS FOR EMERGING ARCHITECTURE 2008

- 42 Hotel, Tudela, Navarre, Spain EMILIANO LÓPEZ & MÓNICA RIVERA ARQUITECTOS
46 Houses, Rudrapur, Bangladesh ANNA HERINGER WITH BASEHABITAT, BRAC UNIVERSITY
and DIPSHIKHA
50 Office and shop, Santiago, Chile ALBERTO MOZÓ STUDIO
54 Housing, Copenhagen, Denmark BJARKE INGELS GROUP
56 Workshop, Kanagawa, Japan JUNYA ISHIGAMI + ASSOCIATES
58 Rest area, Torvdalshalsen, Lofoten Islands, Norway 70°N ARKITEKTUR
59 Mobile shelter, near Snape, Suffolk SANEI HOPKINS ARCHITECTS
60 Apartments, Tokyo, Japan YUJI NAKAE + AKIYOSHI TAKAGI + HIROFUMI OHNO
62 Offices, Zurich, Switzerland CAMENZIND EVOLUTION
64 House, Nandgaon, Maharashtra, India STUDIO MUMBAI
66 Theme park, Antalya, Turkey EMRE AROLAT ARCHITECTS
68 Outdoor bath, Stuttgart, Germany SMAQ
69 Bar and community centre, Thu Dau Mot, Vietnam VO TRONG NGHIA
70 House, Tokyo, Japan TNA
72 House, Nanjing, China AZL
74 Public lavatory, Austin, Texas, USA MIRÓ RIVERA ARCHITECTS
76 House, Tokyo, Japan MAKOTO YAMAGUCHI DESIGN
78 Mixed-use development, Dublin, Ireland BUCHOLZ MCEVOY ARCHITECTS
80 House, Tokyo, Japan MASAHIRO HARADA + MAO / MOUNT FUJI ARCHITECTS STUDIO
82 Water purification plant, Sant'Erasmus Island, Venice, Italy C+S ASSOCIATI
83 House, Trondheim, Norway BRENDELAND & KRISTOFFERSEN
84 Garden pavilions, Potters' Fields, London DSDHA
86 Kiosk, Madrid, Spain BRUT DELUXE
87 Public lavatories, Jinhua City, China DnA DESIGN AND ARCHITECTURE

PRODUCT REVIEW

- 90 Patricia Urquiola's new range of bathroom furniture and fittings for Hansgrohe

REVIEWS

- 94 Light, air and openness; the English parsonage; Michelangelo; Toshiko Mori
96 Osbert Lancaster delights at the Wallace Collection; Browser; Diary

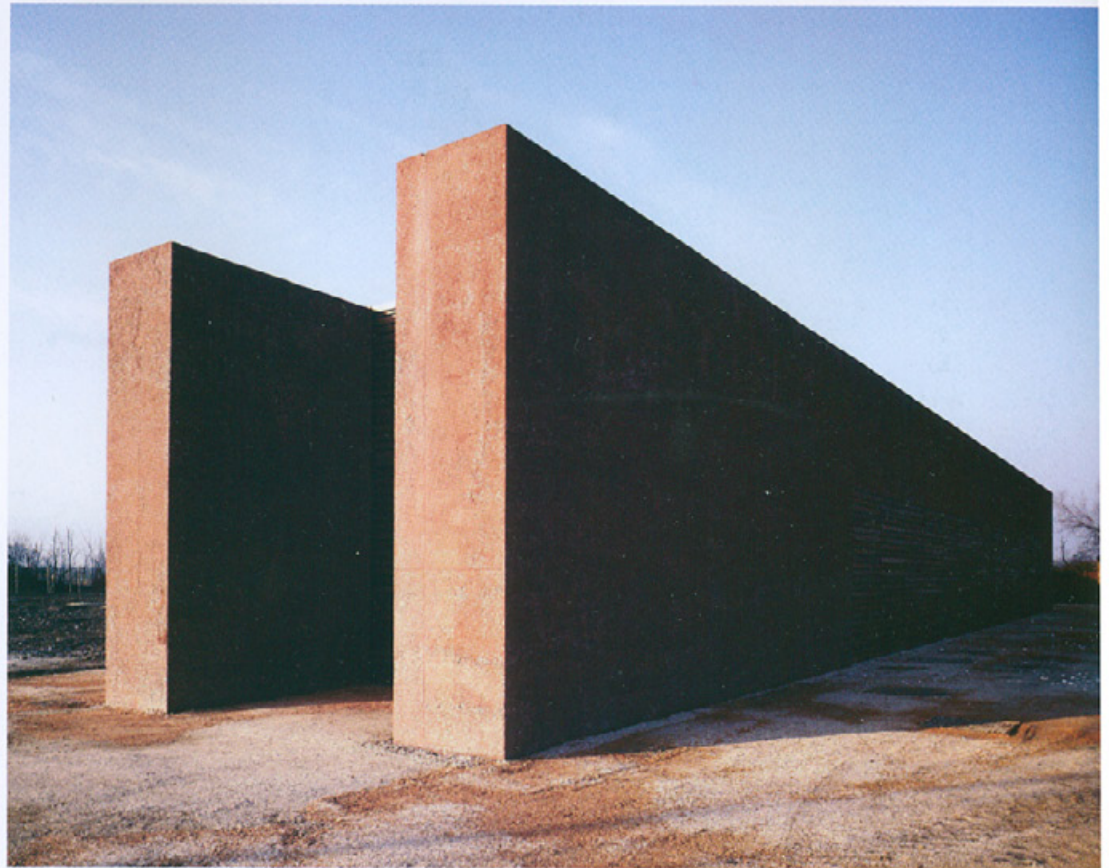
DELIGHT

- 98 Orang-utan enclosure, Perth, Australia IREDALE PEDERSEN HOOK ARCHITECTS

Venice and water enjoy a historic symbiosis, so this project for a water purification plant on Sant'Erasmus Island in the northern part of the lagoon has a special local resonance, even though the water is nowhere to be seen. The building consists of two parts: a large subterranean chamber that contains the purification plant and an above-ground housing for maintenance equipment and the supply of electricity.

Four hefty walls of reinforced concrete are set parallel in the landscape, enclosing and defining the surface structure. The rough, untreated concrete is coloured with red oxide pigment and the massive walls, each one metre thick, are inset at intervals with slatted iroko panels for ventilation. Echoing the military structures that are now part of an adjacent park, the plant has a heroic, monolithic quality, like an abandoned gun battery, elevating a simple industrial container into something more curiously alluring. C. S.

Architect
C+S Associati, Treviso
Project team
Carlo Cappai, Maria Alessandra Segantini
Photographs
Pietro Savorelli



WATER TEMPLE

This industrial installation has a stark, monolithic presence.

- 1 The industrial monolith.
- 2 Parkland context.
- 3 Iroko panels ventilate the structure.



long section



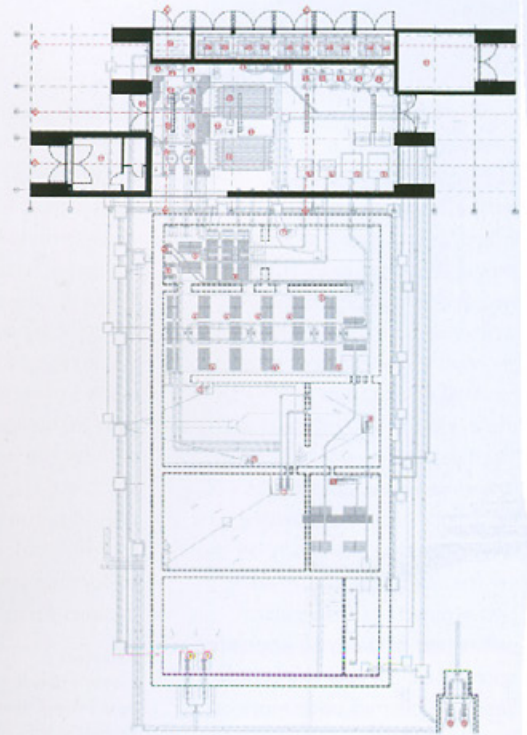
2

HONOURABLE MENTION
WATER PURIFICATION PLANT,
SANT'ERASMO ISLAND,
VENICE, ITALY
ARCHITECT

C+S ASSOCIATI



3



combined ground and basement level plans (scale approx 1:75)