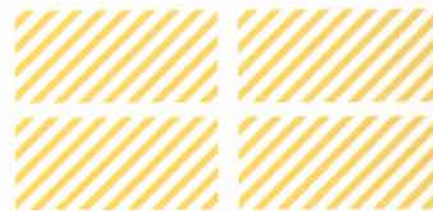




CAR PARKS

ARTPOWER

CONTENTS

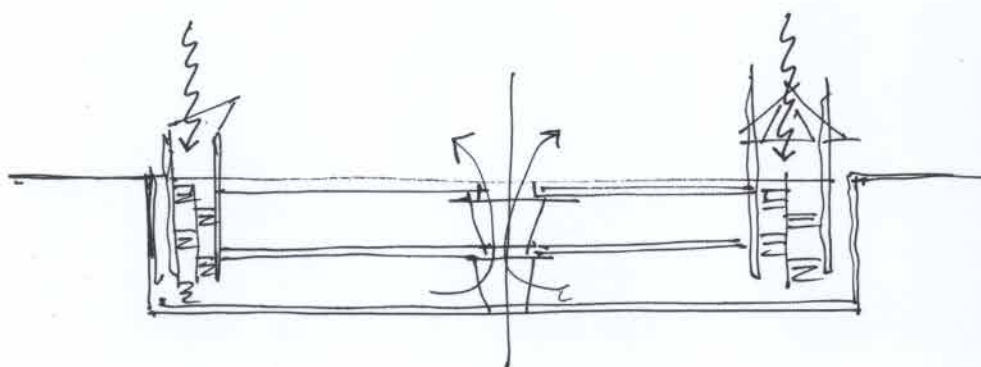


008	PARKING ROTUNDA AT HAMBURG AIRPORT, GERMANY	116	CARPARK, AKERSHUS UNIVERSITY HOSPITAL
012	PARK AND RIDE FÖLLING	122	CARPARK, BILLUND AIRPORT
024	CAR TOWERS AUTOSTADT IN WOLFSBURG	130	UNIVERSITY HOSPITALS PATIENT PARKING GARAGE
028	VERANDA CAR PARK, ROTTERDAM	136	CHESAPEAKE BUILDING 13 AND CAR PARK TWO
036	MUSEUMPARK PARKING GARAGE, ROTTERDAM	148	LA PALMA AIRPORT NEW TERMINAL
046	INSULINDE CAR PARK, ROTTERDAM	152	ENLARGEMENT OF THE TRADE FAIR IN MADRID (IFEMA)
052	NEW BUILDING FOR URBAN MANAGEMENT IN MURCIA	158	SANTA MONICA MUNICIPAL PARKING GARAGE IMPROVEMENTS
060	URBAN VERTICAL PARKING DEVELOPMENT	162	PRINCETON CARPARK
066	ZOB – KIEL PARKING SHIP	164	CAR PARK OF QUEEN ELIZABETH HOSPITAL BIRMINGHAM
074	P&R DE UITHOF UTRECHT	168	VDAB
078	P&R HOOGGELEGEN	174	WORLD SQUARE CAR PARK
084	SANTA MONICA CIVIC CENTER PARKING STRUCTURE	182	LARGE PARKING ROTUNDA AT HAMBURG AIRPORT, GERMANY
092	MULTI-LEVEL PARKING VOESTALPINE	190	CWO CARPARK, AALBORG
106	LINCOLN STREET GARAGE		

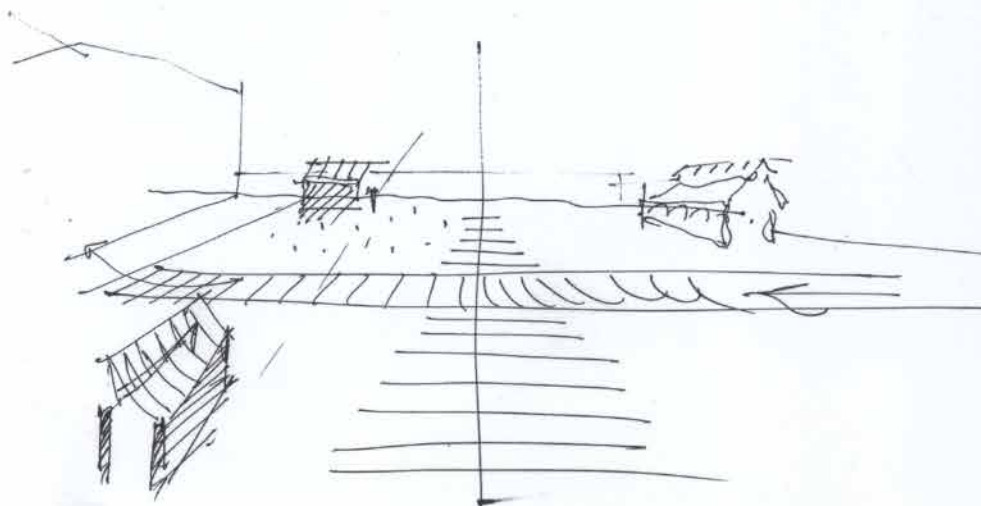
198	UPC. UNDERGROUND PARKING CONEGLIANO	290	GREENWAY SELF PARK
208	BERGEN TOWN CENTER PARKING GARAGE	300	PUBLIC CAR PARK, DUBROVNIK
210	LANE AVENUE PARKING GARAGE AND SAS OFFICE BUILDING-COLUMBUS	314	CAR PARK AIX-EN-PROVENCE, FRANCE
216	UNIVERSITY OF NEVADA AT LAS VEGAS TROPICANA GARAGE	320	BUNTING GARAGE
218	CAR PARK ONE AT CHESAPEAKE	326	NOVARTIS UNDERGROUND CAR PARK & GATE
226	THE MOUNTAIN	332	UNDERGROUND CAR PARK IN THE CENTRE OF BRED A
236	VAN BEUNINGENPLEIN, AMSTERDAM	334	PUBLIC PARKING HOUSE
244	COLORADO CONVENTION CENTER PARKING STRUCTURE	338	TERMINUS MULTIMODAL HOENHEIM NORD
250	DENVER INTERNATIONAL. AIRPORT PARKING GARAGES	342	PARKING DU CENTRE
254	MINETA SAN JOSE INTERNATIONAL AIRPORT, CONRAC	346	PARKING HOTEL PUERTA DE AMÉRICA
260	MULTI-STOREY CAR PARK, HAMBURG SPEICHERSTADT, GERMANY	354	NIEDEROESTERREICHISCHES LANDESMUSEUM
268	1111 LINCOLN ROAD	358	OFFICE AND RESIDENTIAL BUILDING NEUTORGASSE
276	GARLAND CENTER, UNIVEERSITY OF ARKANSAS, FAYETTEVILLE, ARKANSAS	360	MULTI-STOREY CAR PARK COVENTRY UNIVERSITY
284	NEWTON ROAD PARKING & CHILLED WATER FACILITY	364	ARNHEM CENTRAL
		368	CURBAN PARKING
		370	DAVIS GARAGE
		374	CONTRIBUTORS

UPC. UNDERGROUND PARKING CONEGLIANO

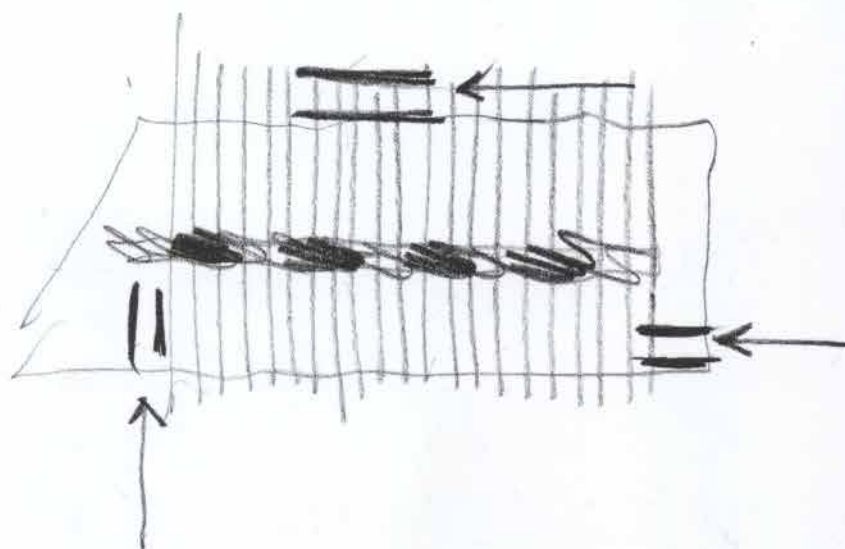
Client: Conegliano Servizi spa
Location: Conegliano, Italy
Area: 16,000 m²



>> Section sketch



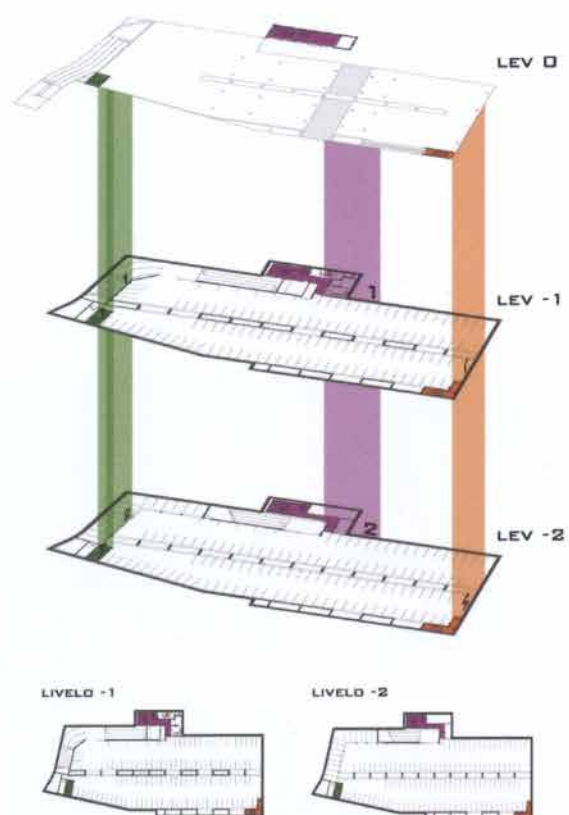
>> Sketch of the square



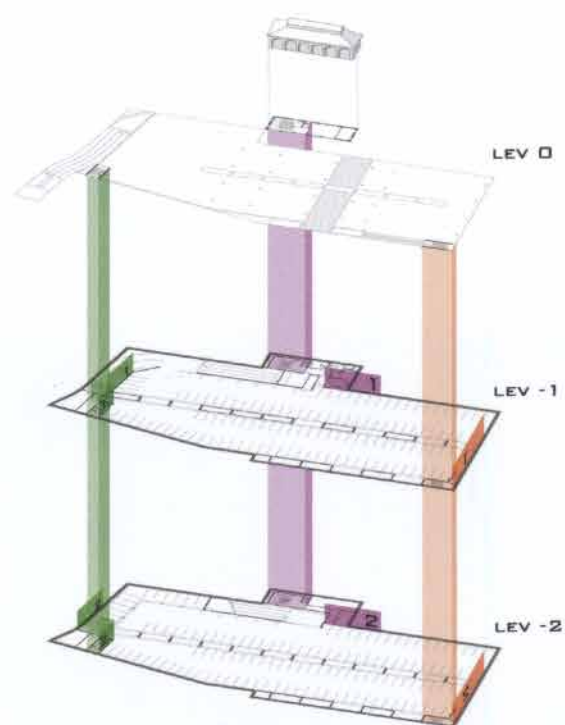
>> Sketch of the plan





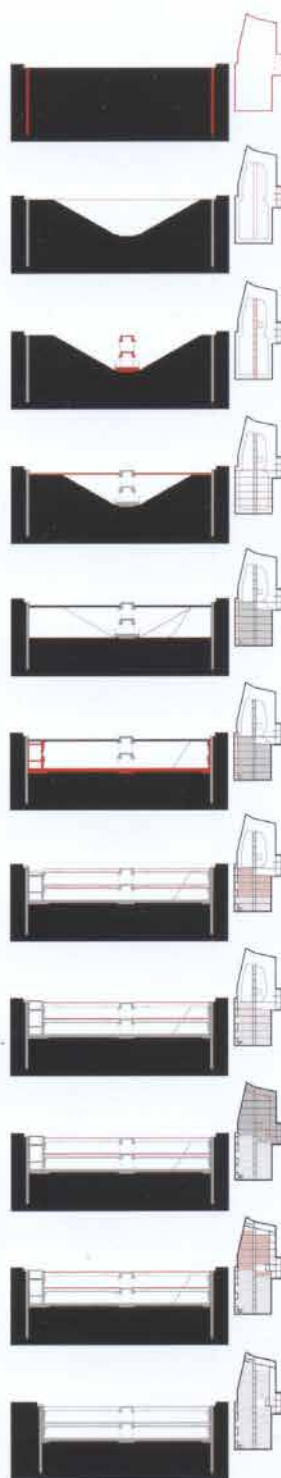


>> Diagram of colors and floors of the parking



>> Diagram of the colors





>> Detail of the construction phases



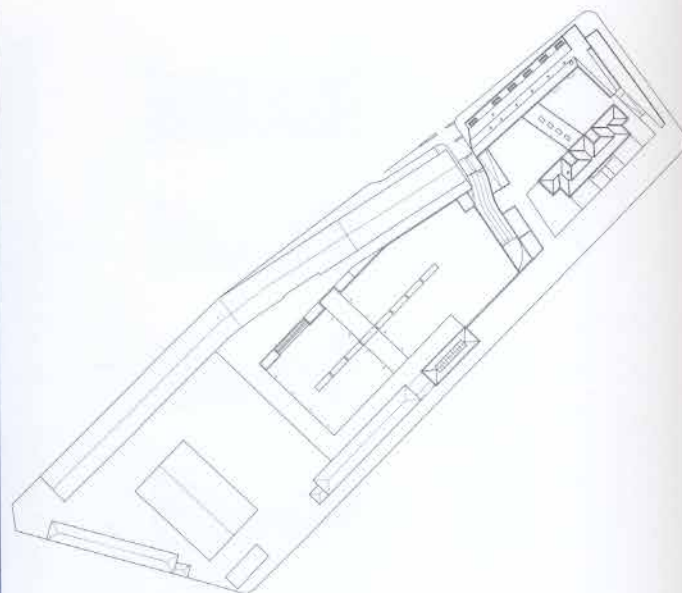
The urban refurbishment is an infrastructure knot at the entrance of the Town of Conegliano.

The main idea for the urban refurbishment of the area is based on shaping empty spaces, both above and below the ground. Underground the two-storey car parking for 350 cars shapes the empty space freeing it from any intruding plants or systems, which are all concentrated in the central shaft: the structure, with its system of pillars, which opens up like a tunnel, lets natural light flow right in, provides ventilation and is the support structure for the horizontal elements creating 16 metres wide free spans. The

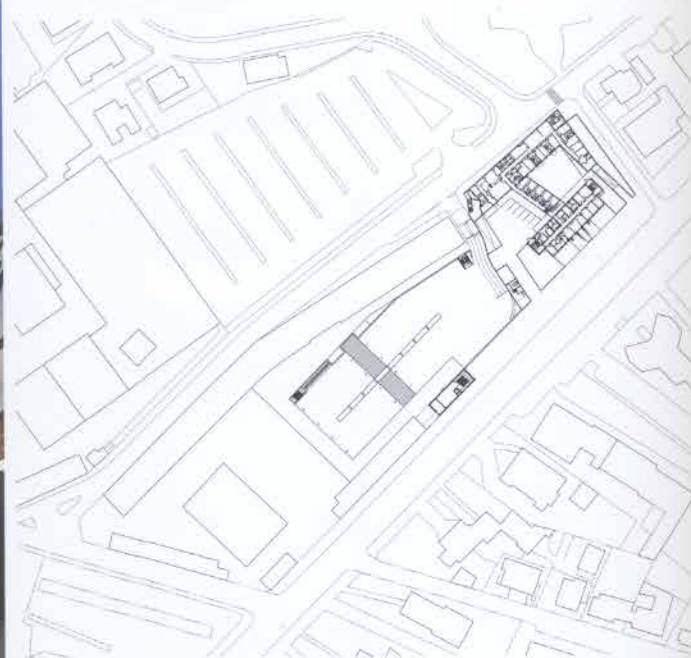
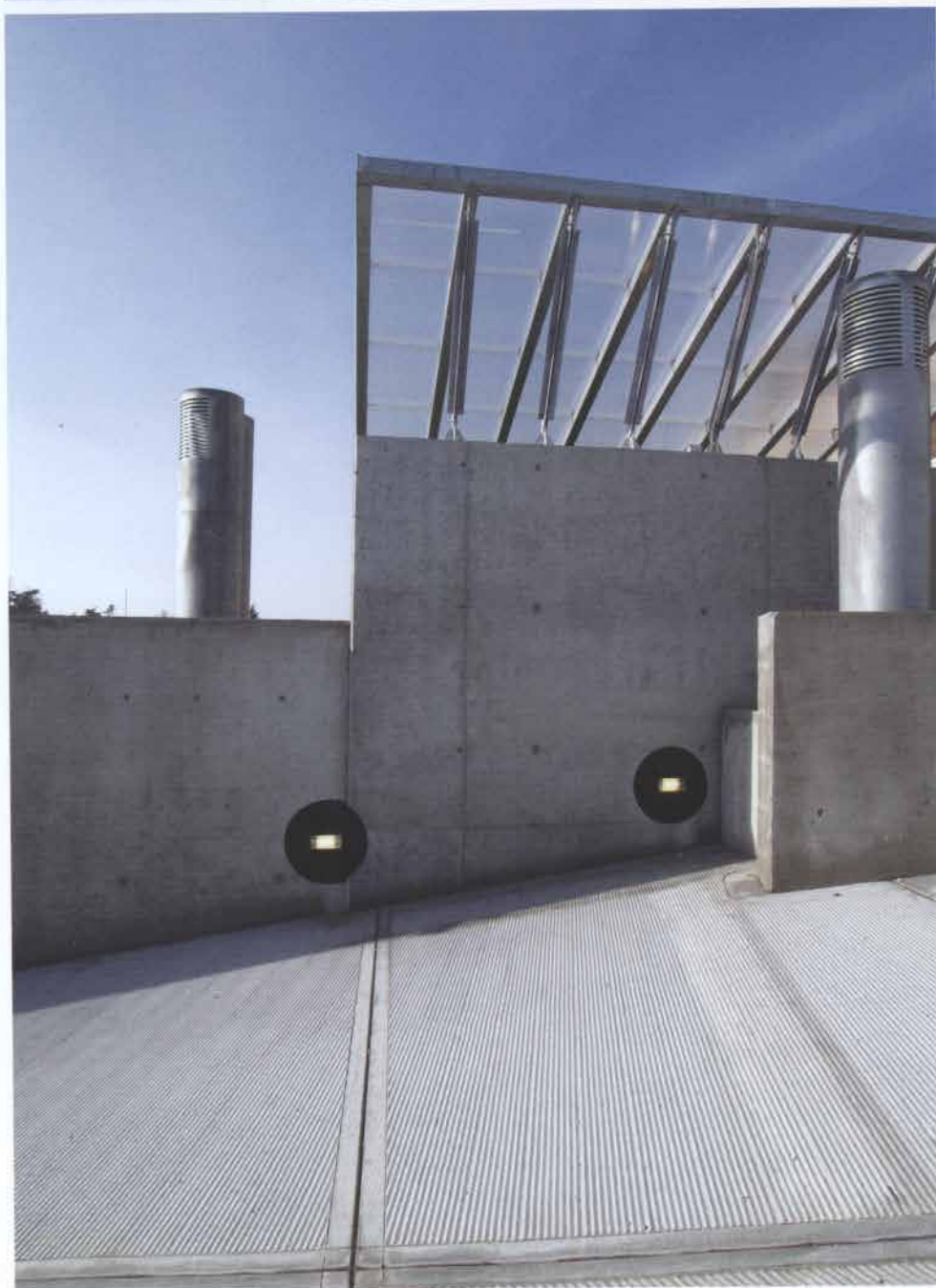
concrete blades with emergency exits coloured in green, orange and purple and covered by canopies, are the only outside signs of the underground parking.

The temporary square is absolutely made of the stones of the Piave River and it is crossed only by a path made of larch boards.

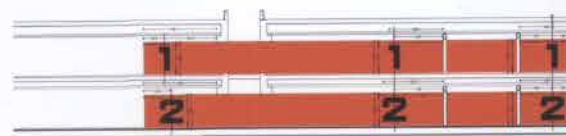
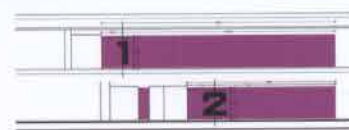
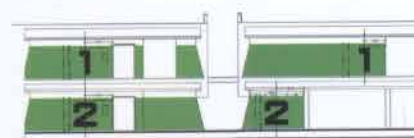
Colour outlines the parking orientation signing the security exits in a special way. Green, orange and purple lacca design the whole space of the security exits. The graphic signs, in this project, become spaces and, viceversa, space becomes a graphic solution.



»» Roof plan

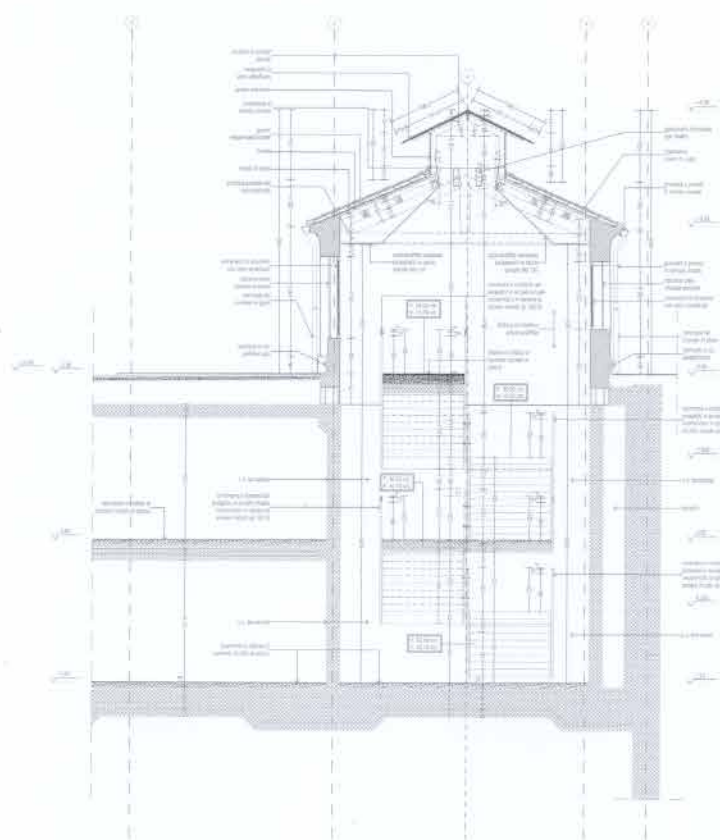


»» Ground floor

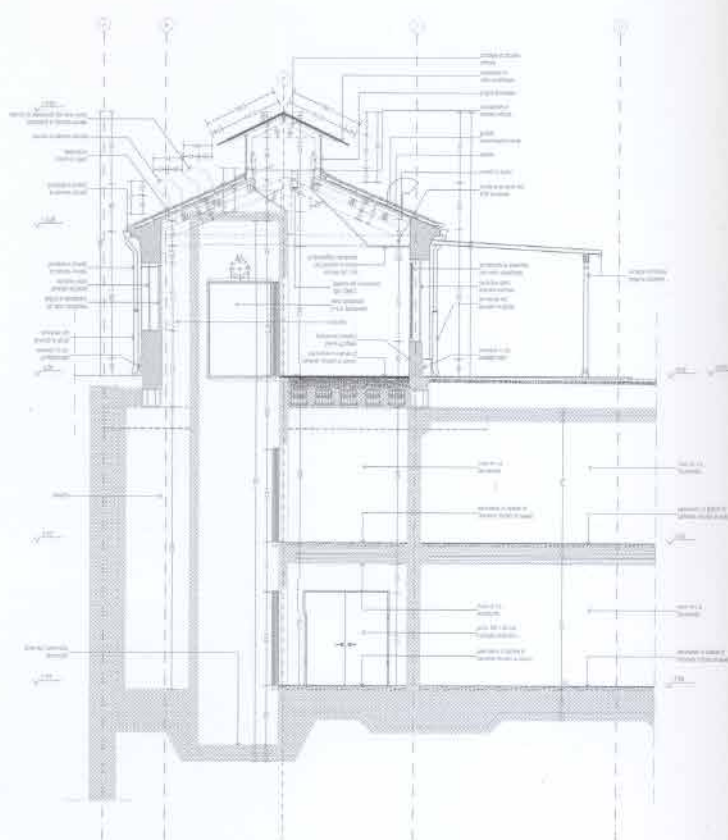


»» Section diagram of the colors



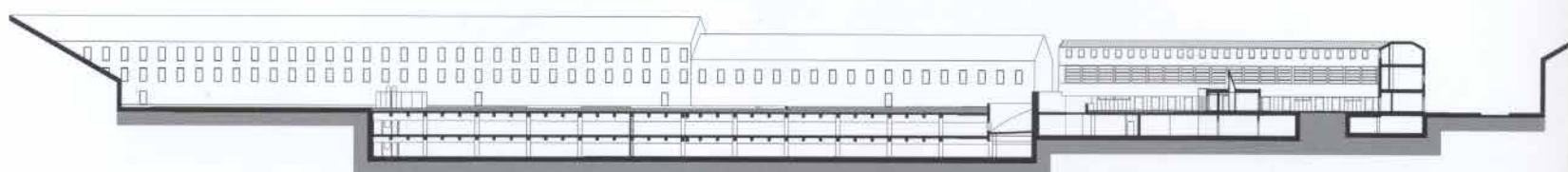


SEZIONE TRASVERSALE A-A
Scala 1:50



SEZIONE TRASVERSALE B-B
Scala 1:50

>> Detail



>> General Section





